

NOTICE OF WETLAND RULEMAKING PETITION 2017-396.P
10/27/2017

A request for a Wetland Reclassification Rulemaking Petition of the Beaver Meadow Wetlands, pursuant to the provisions of Section 7 of the Vermont Wetland Rules, has been received from the Ripton Conservation Commission.

The wetland can be located by taking FR 90 South from the Upper Bristol Notch Road, then take FR 90C south where FR bends west. Note that FR90C skirts the eastern part of Beaver Meadow and connects the two ends of this road. The wetland is approximately 66 acres in size and includes emergent, scrub shrub, and forested wetland with open water components. The Petition requests that the Agency of Natural Resources designate the Beaver Meadow Wetland as Class I for the following functions: Water Storage for Flood Water and Storm Runoff, Surface and Ground Water Protection, Fish Habitat, Wildlife Habitat, Exemplary Wetland Natural Community, Rare, Threatened, and Endangered Species Habitat, Education and Research in Natural Sciences, Recreational Value and Economic Benefits, Open Space and Aesthetics, and Erosion Control through Binding and Stabilizing the Soil. In accordance with Section 7.4 of the Vermont Wetland Rules, the Agency is considering whether to propose to reclassify the wetland from Class II to Class I through rulemaking.

A public meeting is scheduled on **Wednesday, November 29th at 7pm at the Ripton Community Coffee House** at 1305 VT-125, Ripton, VT. The purpose of the public meeting is to allow interested persons to submit comments on the Vermont Natural Resources Council's petition to reclassify the wetland from Class II to Class I. Consideration for rulemaking shall include an evaluation of the merits of the wetland's functions and values as described in Section 5 of the Vermont Wetland Rules, a copy of which can be found online at: <http://dec.vermont.gov/watershed/wetlands/jurisdictional/rules#Section5>

A copy of the draft petition and map is available for review at the Vermont Wetlands Office in Montpelier and may be found online at <https://anrweb.vt.gov/DEC/IWIS/ReportViewer2.aspx?Report=WLPublicNotices&ViewParms=False>

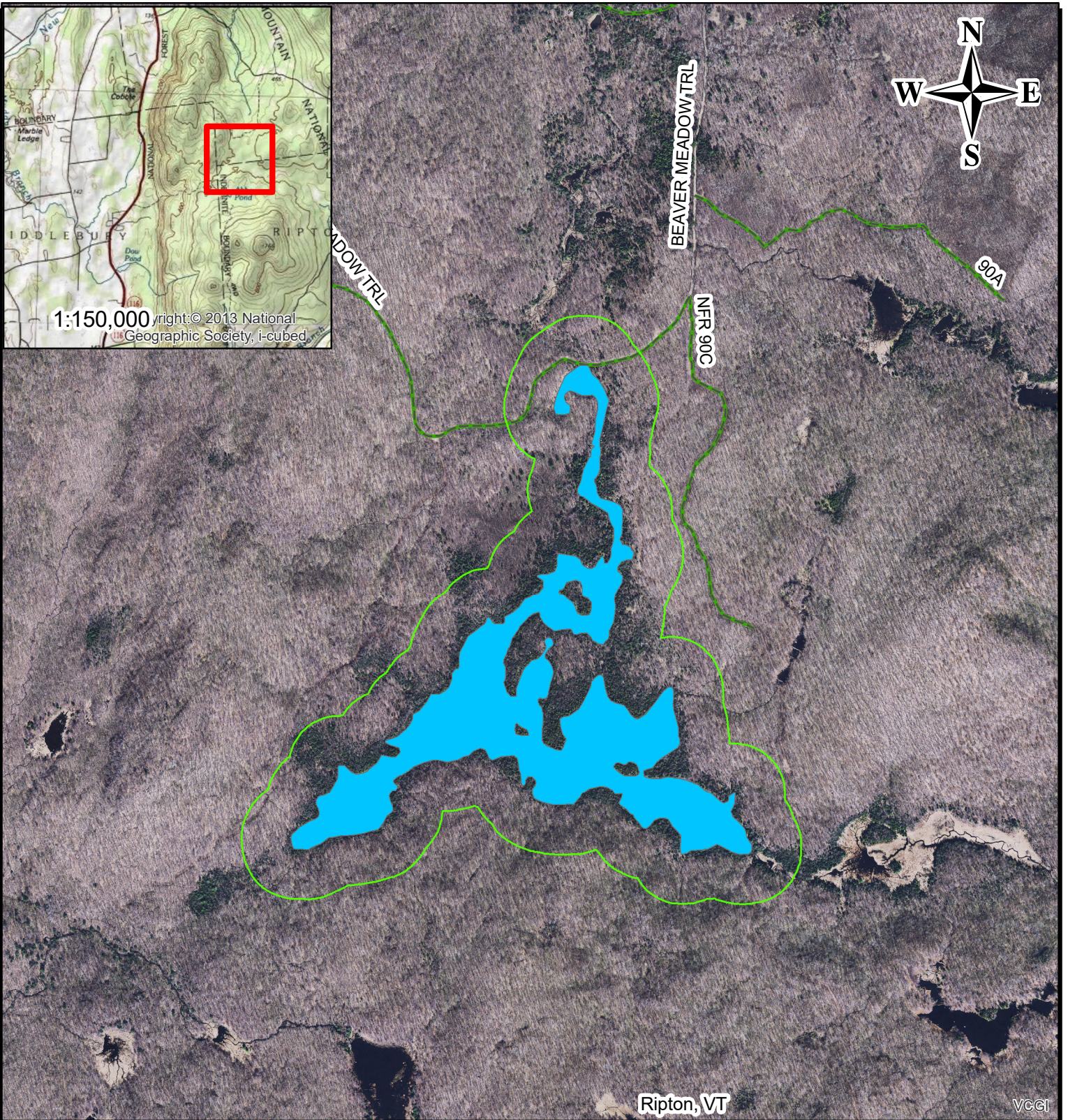
Any person may file comments in writing on this petition by referencing project #2017-396.P through 12/11/2017 and sending them to:

Watershed Management Division
Attn: Wetlands Program
Department of Environmental Conservation
One National Life Drive
Main Building, 2nd Floor
Montpelier, VT 05620-3522

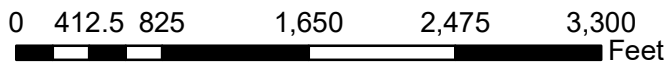
Or to:

ANR.WSMDWetlands@vermont.gov

Enclosure



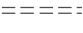



1:150,000 right © 2013 National Geographic Society, i-cubed.



**Proposed Class I Wetland
and 400-foot Buffer
Beaver Meadow, Ripton
Project #2017-396.P**
Cartographer: L. M. Woods
Date: October 19, 2017

Legend

-  Buffer
-  Wetland
-  Class 4 Town Road
-  National Forest Highway

VCGI